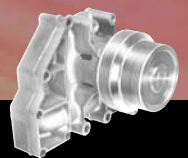
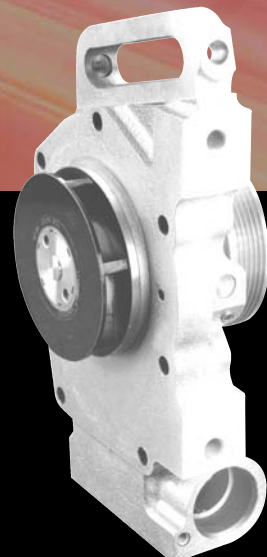
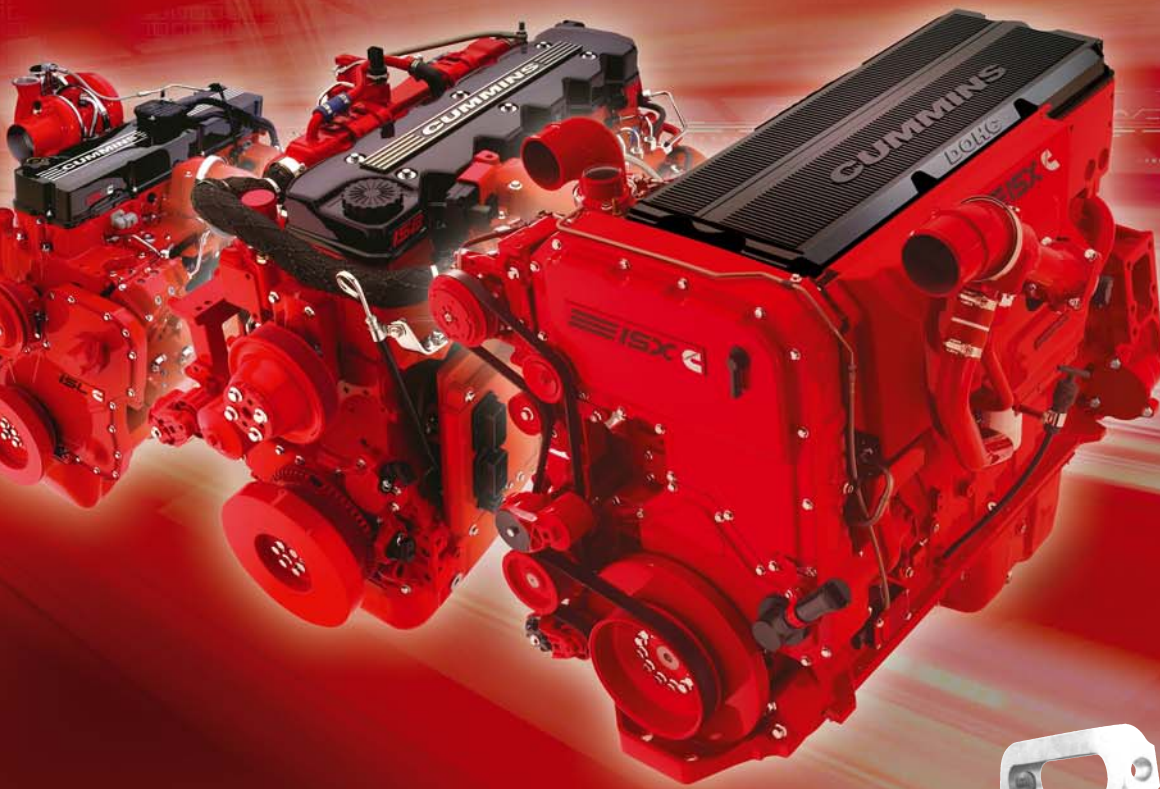




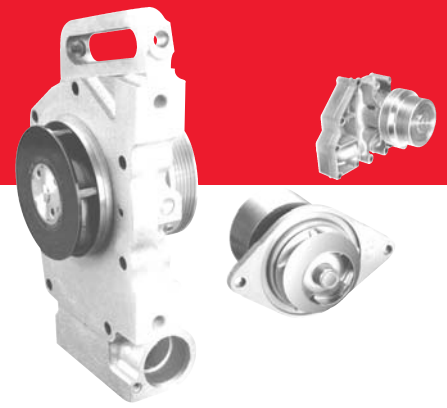
EVERY TIME GENUINE.

WATER PUMP



**Insist On Genuine
Cummins Parts For
Your Overhaul**

WATER PUMP.



Keep It Genuine And You'll Keep Your Cool.

Admittedly, a water pump isn't as glamorous as a turbocharger. But it is a vital engine component nonetheless. Because an engine running too hot or too cold can suffer from decreased fuel efficiency, poor performance and reduced engine life. That's why Cummins ReCon gives every water pump the respect it deserves.



Latest Technology. Everytime.

The seal is the most critical component of a water pump and also the most common point of failure. Extensive research and analysis by Cummins engineers has yielded the best heavy duty, unitized seals available. Top grades of facing materials are used to resist wear and maximize seal durability. To prolong service life the seal is designed with no glue joints. Spring tension between the seal and seat is optimized to reduce friction. These seals lead the industry in durability and allow your Cummins engines to keep running cool under even the most extreme operating conditions. But the seal is only part of the quality story. Cummins ReCon water pumps are completely remanufactured in a factory environment. In fact, every pump is completely disassembled and every part is individually inspected using the latest technology. To assure consistent quality, all critical machining operations are computer controlled. Any part that can not be restored to Cummins exacting specifications is replaced with a brand new genuine Cummins part for greater durability. After final assembly every water pump is functionally tested to assure optimum performance and reliability.

The Best Quality.

Use Cummins ReCon water pumps on your engines with confidence. It's the only way you can have peace of mind that comes from running with the best water pump seal technology and the highest quality remanufactured product in the business.

Every Feature.

- The most complete line of water pumps for all Cummins engines
- Factory remanufactured, not just repaired – Every part is restored to Cummins specifications or replaced with a genuine Cummins new part
- Computer controlled machining for consistent high quality
- 100% Replacement of critical wear parts
- 100% Functional testing assures reliability and durability
- Full Core Acceptance with no hidden core billbacks and no surprise charges – You know the total cost upfront
- The best warranty support from the largest and best independent service network in the world – Cummins Inc.

CHECK WITH YOUR APPROVED CUMMINS DISTRIBUTOR FOR AVAILABLE PROMOTIONS



Cummins Engine Company Ltd.
Royal Oak Way South
Daventry - Northants NN11 5NU
United Kingdom

Phone: +44 (0)1327 886464
Fax: +44 (0) 870 241 3180
E-mail: cabo.customerassistance@cummins.com
Internet: www.cummins.com

Cummins. Everytime Genuine. Service Everywhere.